



Transport Desgagnés inc.

21 Marché-Champlain Street
 Québec, Québec G1K 8Z8
 Canada
 Tel: 418.692.1000
 Fax: 418.692.6044
 Email: info@desgagnes.com
 Website: www.desgagnes.com

M/T Damia Desgagnés



MAIN PARTICULARS

GRT: 11,978
 NRT: 3,761
 LOA: 135.00 m
 LBP: 129.24 m
 Breadth (moulded): 23.50 m
 Depth (moulded): 11.30 m
 Deadweight: 14,419 mt at 7.9 m (summer draught, salt water)*
 Builder: Besiktas Shipyard, Turkey, 2017
 IMO Number: 9766437
 Port of Registry: Québec
 Flag: Canada
 Official Number: 840569
 Call Sign: CFAV
 Type: Asphalt-Oil-Chemical-Bitumen Tanker
 Double Hull, IMO Type 2
 Class: Bureau Veritas, I ✕ Hull ✕ Mach; Oil Tanker; Asphalt Carrier, Chemical Tanker; Bitumen, DualFuel; FP>60°C; ESP; Unrestricted Navigation; Polar Class 7, ✕ AUT-UMS, ✕ SYS-NEQ-1, MON-SHAFT, Green Passport, Protected FO Tank, CleanShip Super (BWT, GWT, NDO-7 days), InwaterSurvey, SPM, VCS, Cold (H-30)

CARGO SYSTEM

Total Capacity: 14,957 m³ at 98%
 Number of Tanks: 12 x Cargo + 2 x Slop
 Number of Manifolds: 4 x Cargo + 1 x Slop Discharge
 Max. Loading Rate: 1,600 m³/h (4 x Cargo Manifolds)
 Max. Discharge Rate: 1,600 m³/h (4 x Cargo Pumps)
 Cargo Tank Pumps: 4 x 400 m³/h, 10 bar
 Slop Tank Pump: 1 x 150 m³/h, 10 bar

BALLAST SYSTEM

Ballast Water Treatment System (BWTS): Alfa Laval PureBallast
 Pumps: 2 x 500 m³/h, 2 bar | Total Ballast: 6,532 m³ at 100%

MACHINERY

1 x Main Engine Wärtsilä 5RT-FLEX50DF, 5,450 kW, 110 rpm
 2 x Auxiliary Generators, 1,480 kW each, 1,200 rpm
 1 x Auxiliary Generator, 1,110 kW, 1,200 rpm
 1 x Emergency Generator, 360 kW, 1,800 rpm
 1 x Shaft Alternator/E-motor, 1,500 kW (PTO) / 1,450 kW (PTI)
 1 x Controllable Pitch Propeller, 4 blades, 5,200 mm dia.
 1 x Bow Thruster, 750 kW; 1 x Stern Thruster, 550 kW
 2 x Thermal Oil Boilers/Heaters, 3,000 kW each

SPEED AND CONSUMPTION (MDO)

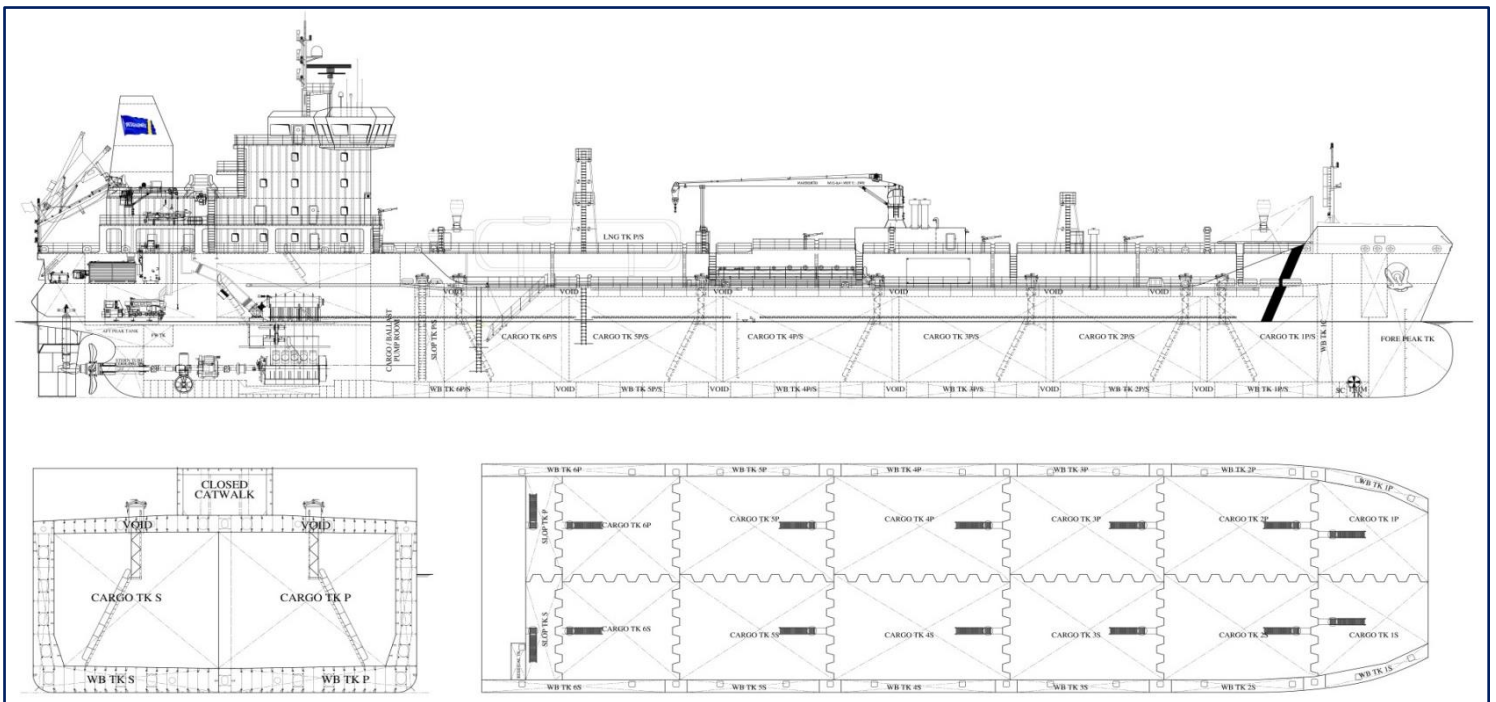
M/E at Sea: Eco Speed: Abt 12.0 kn on abt 11.4 mt/day at 48% MCR
 Normal Service Speed: Abt 13.0 kn on abt 14.2 mt/day at 60% MCR
 High Service Speed: Abt 13.5 kn on abt 17.0 mt/day at 73% MCR
 A/E at Sea: 1.5 – 2.0 mt/day
 A/E in Port: 1.5 – 4.0 mt/day
 Boilers: Up to 10.0 mt/day depending on cargo and weather

TANK CAPACITIES

MDO: 791 m³ at 98% | LNG: 612 m³ at 98% | Fresh Water: 193 m³ at 100%

FEATURES AND COMPLIANCE WITH REGULATIONS

- Environment friendly vessel with LNG as a fuel, providing a reduction of the full spectrum of air emissions, with a superior performance in terms of CO₂, NO_x, SO_x, and particles emissions
- Safety focus with exceptional level of redundancy on propulsion and auxiliary systems, providing outstanding protection to sea staff and their ship, the environment, and to the Arctic re-supply mission
- Computerized Monitoring System for Cargo and Ballast Tanks, including Ullage, Temperature, High Level Alarm, etc.
- Portable Washing and Permanent Gas-freeing System for Cargo Tanks
- Loading Software including Stability Calculation for Intact or Damaged Vessel, etc.
- Closed Loading System with Vapor Return Line
- Stainless Steel Heating Coils for Cargo, Slop and Residual Tanks
- Solas, Marpol, St. Lawrence Seaway, Suez, Panama



*Deadweight (Trim and Stability Booklet less 300 mt) is subject to final lightship verification. Speed and consumption figures are calculated basis maximum Beaufort 2, no swell, and no adverse currents. Consumption data assumes shaft generator not in use. All details, including speed and consumption, are 'about' and given in good faith without guarantee. They must not be used as basis for charter parties or contracts without Owner's explicit written authority.
 (REV. 2022-07-25)