



# Transport Desgagnés inc.

21 Marché-Champlain Street  
 Québec, Québec G1K 8Z8  
 Canada  
 Tel: 418.692.1000  
 Fax: 418.692.6044  
 Email: info@desgagnes.com  
 Website: www.desgagnes.com



## MAIN PARTICULARS

GRT: 11,492  
 NRT: 4,474  
 LOA: 147.00 m  
 LBP: 140.00 m  
 Breadth (moulded): 22.80 m  
 Depth (moulded): 11.55 m  
 Deadweight: 12,167 mt at 8.1 m (summer draught, salt water)  
 Builder: Jiangzhou Union Shipbuilding, China, 2017  
 IMO Number: 9700380  
 Port of Registry: Québec  
 Flag: Canada  
 Official Number: 841786  
 Call Sign: CFA2749  
 Type: Multipurpose Dry Cargo Heavy Lift Ship  
 Class: DNV 100 A5, Ice Class E3, BC, BWM (D2), Equipped for Carriage of Containers, DBC, DG, G, IW, LC, Strengthened for Heavy Cargo, MC E3 AUT EP-D

## BALLAST SYSTEM

Ballast Water Treatment System (BWTS): Panasia Gloen-Patrol P500 (-Ex)  
 Total Ballast: 5824 m<sup>3</sup>

## MACHINERY

1 x Main Engine MAN 5G45ME-C9.5, 4,800 kW at 94 rpm  
 3 x Auxiliary Engines/Generators MAN D2842LE301, 532 kW at 1,500 rpm  
 1 x Shaft Generator SE 400 LU, 611 kW  
 1 x Bow Thruster, 600 kW

## SPEED AND CONSUMPTION (MDO)

M/E at Sea: Service Speed: Abt 13.5 kn on abt 12.75 mt/day at 84 RPM  
 Maximum Speed: Abt 15.0 kn on abt 16.25 mt/day at 94 RPM

A/E at Sea: 1.5 – 3.0 mt/day  
 A/E in Port: 1.5 – 2.5 mt/day  
 Boiler: 1.0 – 1.5 mt/day depending on cargo and weather  
 MDO Capacity: 920 m<sup>3</sup> at 98%

## CARRYING CAPACITY

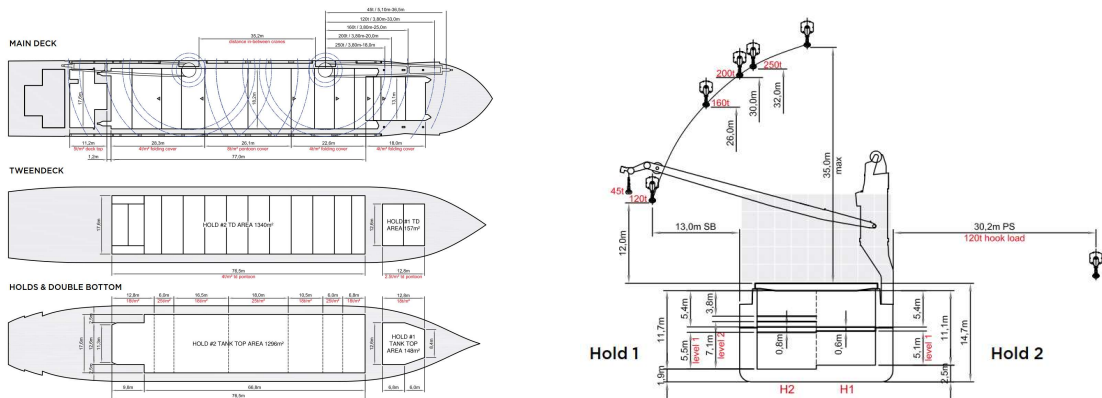
	Hold 1	Hold 2	Total
Bale/Grain:	1,790 m <sup>3</sup>	15,810 m <sup>3</sup>	17,600 m <sup>3</sup>
Containers:	842 TEUs nominal (320 in holds and 522 on deck) 50 reefer plugs on deck		

## CRANES (PORT SIDE)

2 Liebherr Cranes, SWL 250 mt each, combinable up to 500 mt

## COMPLIANCE WITH REGULATIONS

Solas, Marpol, St. Lawrence Seaway, Suez, Panama



## SIDE VIEW

