



Transport Desgagnés inc.

21 Marché-Champlain Street
Québec, Québec G1K 8Z8
Canada
Tel: 418.692.1000
Fax: 418.692.6044
Email: info@desgagnes.com
Website: www.desgagnes.com

M/V Sedna Desgagnés



MAIN PARTICULARS

GRT: 9,611
NRT: 4,260
LOA: 138.70 m
LBP: 130.00 m
Breadth (moulded): 21.00 m
Depth (moulded): 11.00 m
Deadweight: 12,612 at 8.00 m (summer draught, salt water)
Builders: Qingshan Shipyard, China, 2009
IMO Number: 9402093
Port of Registry: Québec
Flag: Canada
Official Number: 833433
Call Sign: CYQE
Type: Multi-Purpose Dry Cargo Heavy Lift Ship with Tweendeck
Class: DNV  100 A5 E3 Multipurpose Dry Cargo Ship, BWM, Equipped for Carriage of Containers, DBC, SOLAS-II-2, Reg. 19, G, IW, Strengthened for Heavy Cargo,  MC E3 AUT

COMPLIANCE WITH REGULATIONS

Solas, Marpol, St. Lawrence Seaway, Suez, Panama

MACHINERY

1 Main Engine MAK/Caterpillar 6M43C, 5,400 kW at 500 rpm
3 Auxiliary Engines/Generators, 443 kW each at 1,500 rpm
1 Shaft Generator, 750 kW
1 Bow Thruster, 500 kW

SPEED AND CONSUMPTION (MDO)

M/E at Sea: Abt. 13.0 kn on abt. 18.0 mt/day at 85% MCR
A/E at Sea: 1.5 - 3.0 mt/day
A/E in Port: 1.5 - 2.5 mt/day
Boiler: 1.0 - 1.5 mt/day depending on cargo and weather
MDO Capacity: 1,110 m³

CARRYING CAPACITY

	Hold 1	Hold 2	Hold 3	Total
Bale/Grain (excl. twd):	2,701 m ³	8,362 m ³	4,889 m ³	15,953 m ³
Containers:	665 TEUs nominal			

CRANES (PORT SIDE)

2 NMF cranes of 180 mt each that may be twinned to lift 360 mt

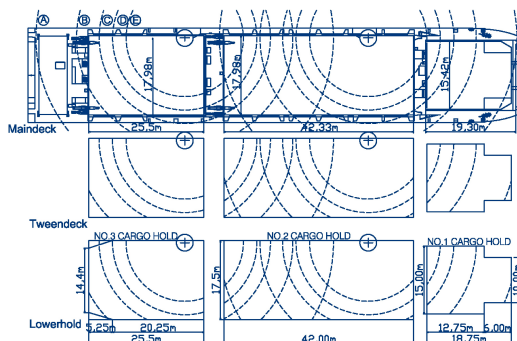
BALLAST SYSTEM

Ballast Water Treatment System (BWTS): Alfa Laval PureBallast
Total Ballast: 5,003 m³

Heights hold 1:
A: 4,50m
B: 5,43m
C: 10,53m

Heights Hold 2:
A: 7,13m
B: 7,45m
C: 2,93m
D: 3,40m
E: 3,25m
F: 11,18m
G: 4,38m
H: 6,00m

Heights Hold 3:
A: 4,38m
B: 5,59m
C: 10,77m



Crane ranges E/F 240
A: 3,3-33,0m/55mt
B: 4,0-24,0m/75mt
C: 4,0-19,0m/95mt
D: 4,0-16,0m/120mt

Crane ranges F 300
A: 3,5-33,0m/70mt
B: 4,5-24,0m/95mt
C: 4,5-19,0m/120mt
D: 4,5-16,0m/150mt

Crane ranges F 360
A: 4,0-33,0m/70mt
B: 4,0-24,0m/95mt
C: 4,5-19,0m/120mt
D: 4,5-16,0m/150mt
E: 5,0-13,0m/180mt

